

# HOTEL TO HEALTHCARE CONCEPT (H2HC)

22 March 2020

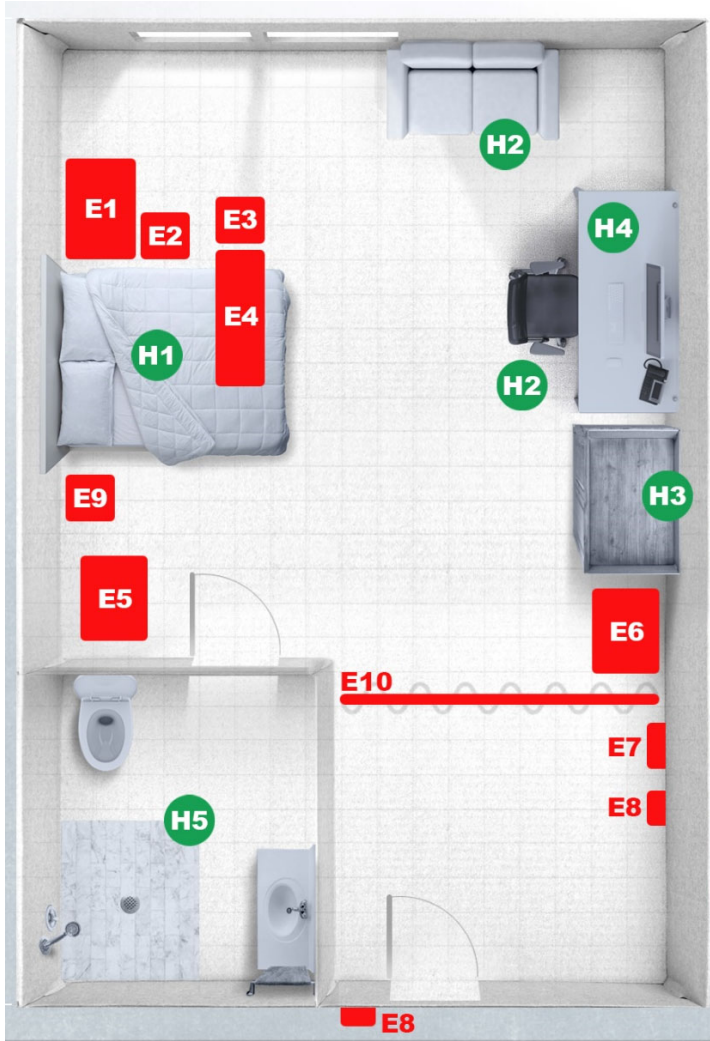


US Army Corps  
of Engineers





# H2HC - HOTEL ROOM to HEALTHCARE ROOM



## HOTEL PROVIDED

- H1. HOTEL BED  
\*WITH MEDICAL LINENS
- H2. HOTEL/RECLINING CHAIR
- H3. HOTEL DESK
- H4. HOTEL WARDROBE
- H5. HOTEL PLUMBING FIXTURES

## ENGINEERING CHANGES

1. REMOVE CARPET
2. INSTALL VINYL FLOORING OR EPOXY
3. \*REVISE HVAC DUCTING AND HEPA FILTERING\*
4. ADD EMERGENCY BACK-UP POWER & UPS
5. ADD ELECTRICAL OUTLETS
6. ADD PRIVACY CURTAIN

## SPECIAL MEDICAL EQUIPMENT – TO BE PROVIDED BY OTHERS (NON-USACE)

- E1. VENTILATOR CAPABLE; STORAGE CABINET
- E2. TELEMETRY/PUMP ON IV STAND
- E3. STOOL
- E4. OVER BED TABLE
- E5. MOBILE WORK STATION
- E6. LINEN HAMPER
- E7. SHARPS/GLOVES
- E8. HAND SANITIZER STATION
- E9. INFECTIOUS WASTE
- E10. CUBICLE CURTAIN

## PHASES

1. SITE (State)
2. BUILD (USACE)
3. SUPPLY (FEMA)
4. STAFF (State)

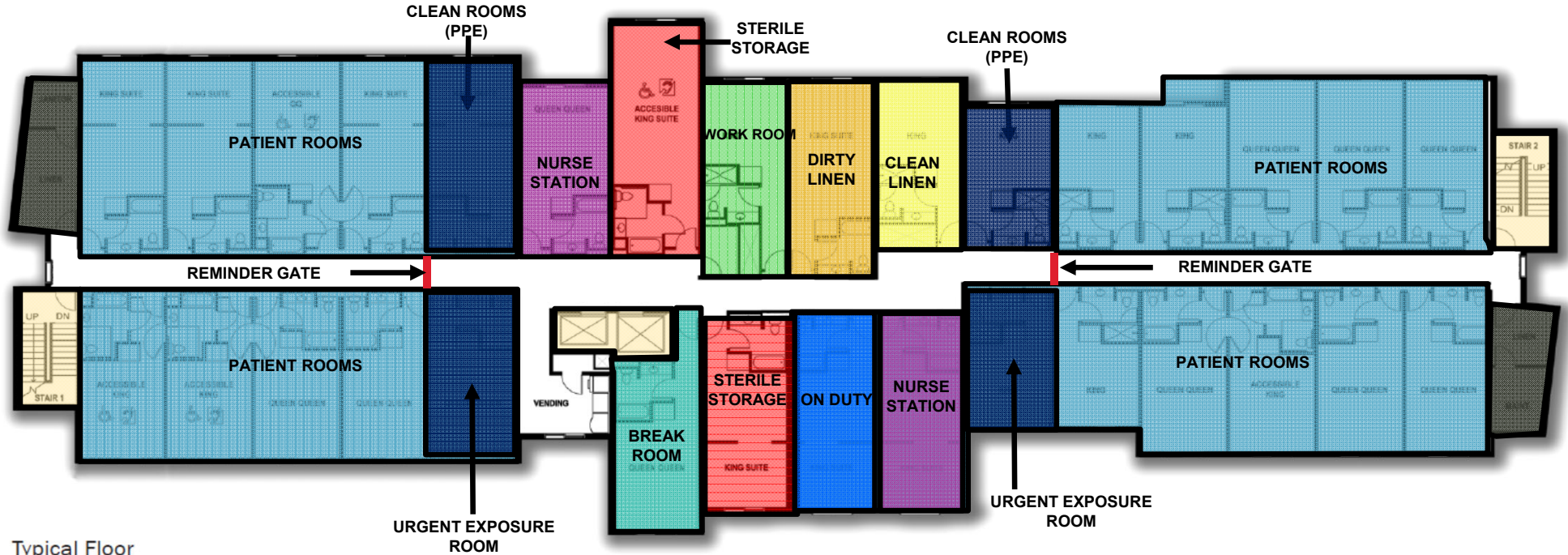
## STANDARD DESIGN

\*COVID  
Non-COVID  
Scalable, Tailorable,  
Site Adaptable





# H2HC - TYPICAL FLOOR PLAN



Typical Floor

### HOTEL PROVIDED

1. HOTEL WI-FI
2. HOTEL PHONE SYSTEM
3. HOTEL IN-HOUSE NETWORK/TVs
4. HOTEL ICE MACHINE/VENDING
5. HOTEL PACKAGED HVAC

### ENGINEERING CHANGES

1. MODIFIED ELEVATOR CONTROLS

### STANDARD DESIGN

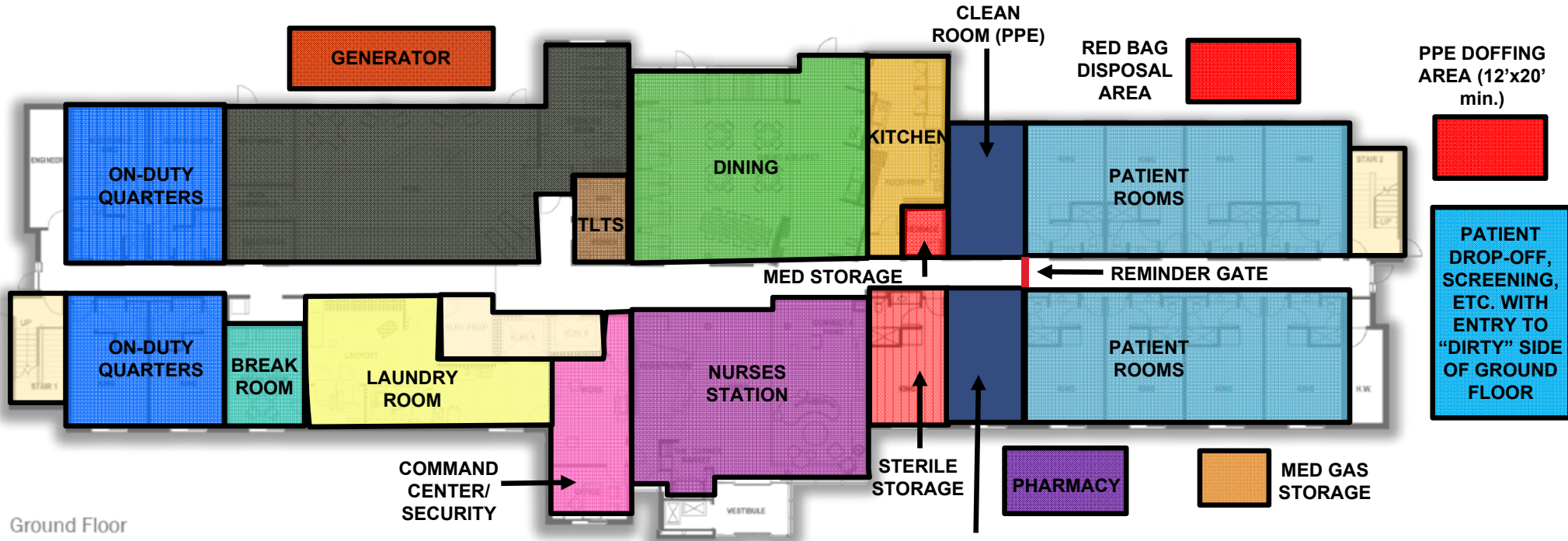
\*COVID  
 Non-COVID  
 Scalable, Tailorable,  
 Site Adaptable

### SPECIAL MEDICAL EQUIPMENT

1. NURSE CALL
2. STORAGE SHELVING
3. WORKSTATIONS
4. MED DISPENSING UNITS
5. # VENTILATORS / FLOOR
6. "CRASH" CART / FLOOR
7. REMINDER GATES
8. EYE/HAND WASH STATIONS



# H2HC - GROUND FLOOR PLAN



Ground Floor

## HOTEL PROVIDED

- HOTEL FURNITURE FOR STAFF QUARTERS
- HOTEL KITCHEN
- HOTEL DINING
- HOTEL VESTIBULE
- HOTEL CCTV FOR SECURITY
- HOTEL CARD READERS

### STANDARD DESIGN

\*COVID  
 Non-COVID  
 Scalable, Tailorable,  
 Site Adaptable

## ENGINEERING CHANGES

- ALL TYPICAL FLOOR PLAN ADDITIONS
- PLUS GENERATOR

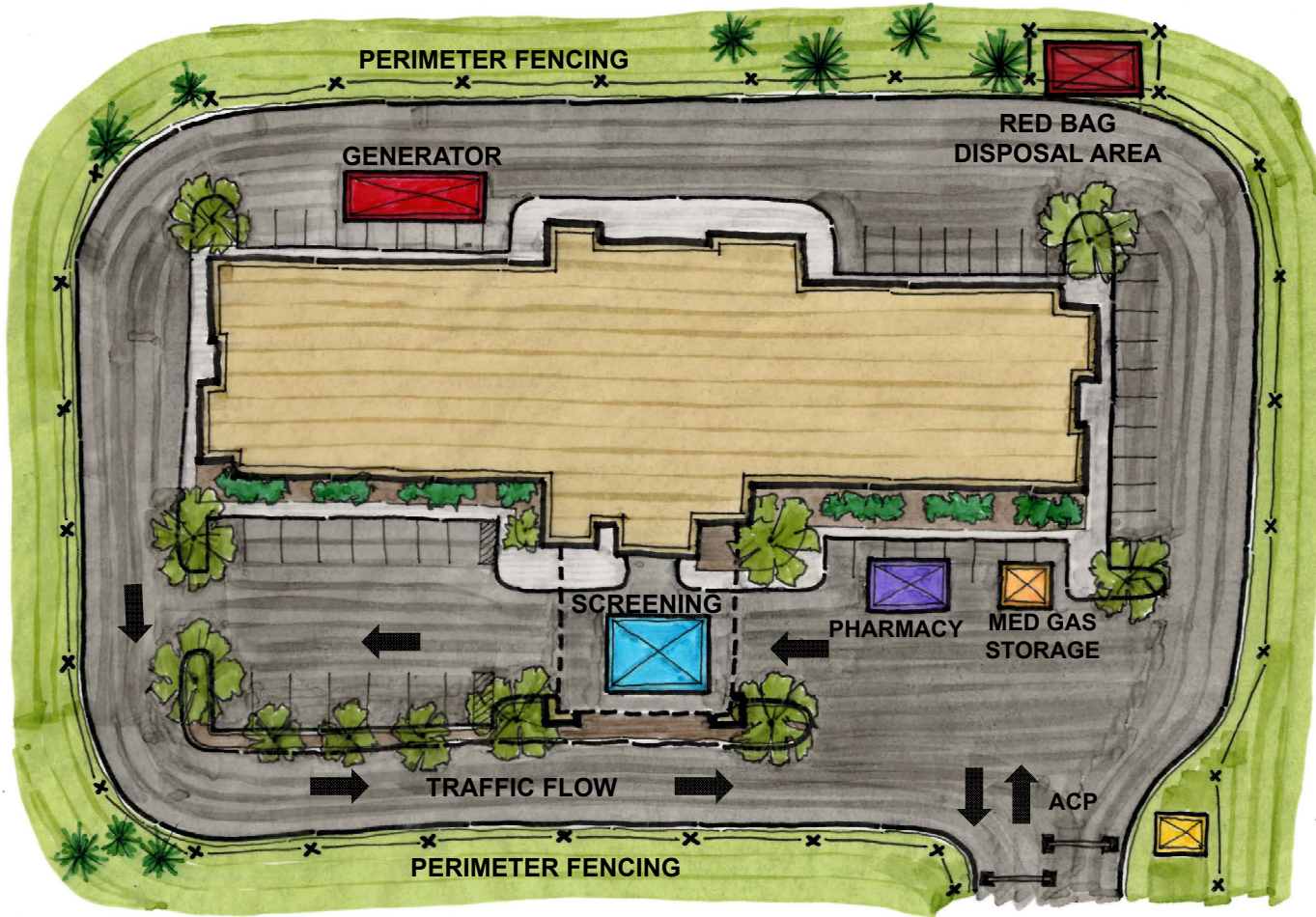
## NEW EQUIPMENT

- METAL DETECTOR
- VTC FOR COMMAND CENTER
- CONTROLLED ACCESS
- INFECTIOUS/CLEAN
- REMINDER GATES
- EYE HANDWASH STATIONS





# H2HC – SITE IMPROVEMENT PLAN



## ENGINEERING CHANGES

- ADD PERIMETER FENCING
- ADD GENERATOR
- ADD PATIENT SCREENING TENT
- ADD EXTERIOR PHARMACY
- ADD MED GAS STORAGE
- ADD ACCESS CONTROL POINT (ACP)
- ADD RED BAG DISPOSAL AREA



# ARENA TO HEALTHCARE CONCEPT (A2HC) ALTERNATE HEALTHCARE FACILITY



US Army Corps  
of Engineers



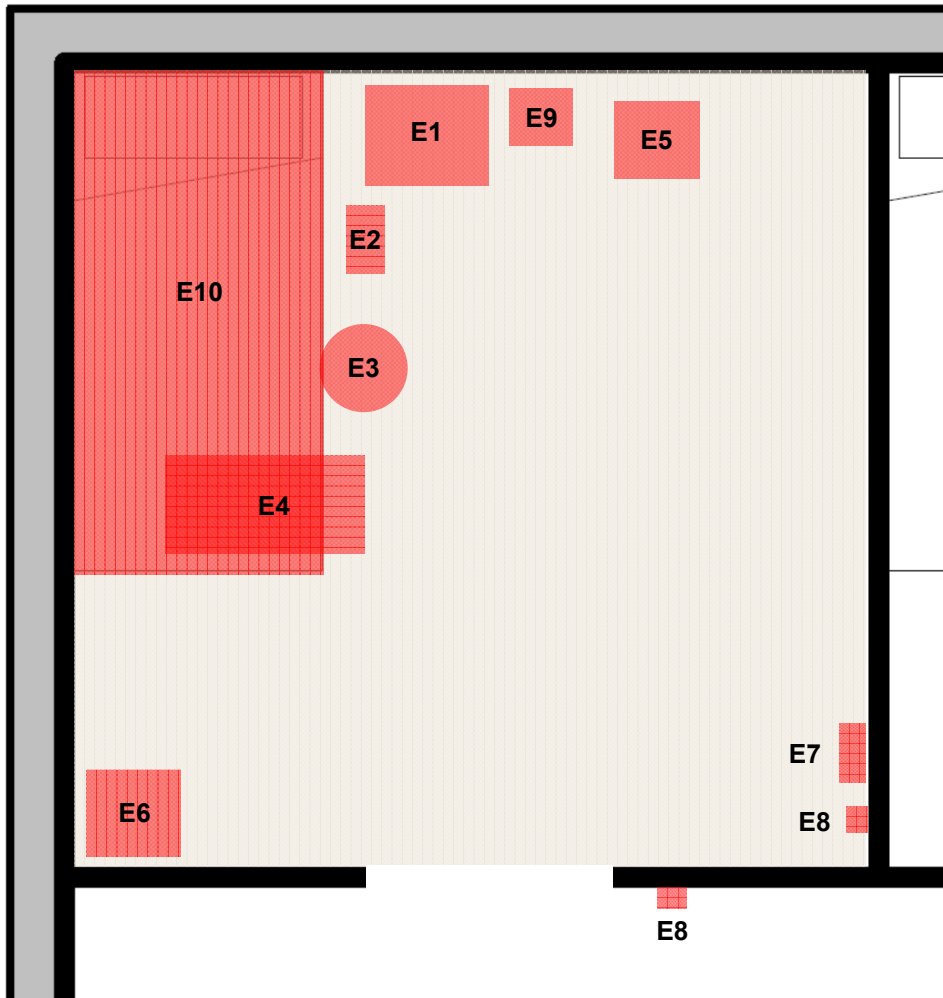
# A2HC PATIENT CONTAINMENT EXAMPLE







# A2HC TYPICAL POP-UP CARE SPACES



## ENGINEERING CHANGES

1. ADD HVAC DUCTING AND HEPA FILTERING
2. ADD EMERGENCY BACK-UP POWER
3. ADD ELECTRICAL OUTLETS
4. ADD DATA OUTLETS
5. ADD PLUMBING

## NEW EQUIPMENT - TO BE PROVIDED BY OTHERS (NON-USACE)

- E1. VENTILATOR CAPABLE; STORAGE CABINET
- E2. TELEMTRY/PUMP ON IV STAND
- E3. STOOL
- E4. OVER BED TABLE
- E5. MOBILE WORK STATION
- E6. LINEN HAMPER
- E7. SHARPS/GLOVES
- E8. HAND SANITIZER STATION
- E9. INFECTIOUS WASTE
- E10. PATIENT BED



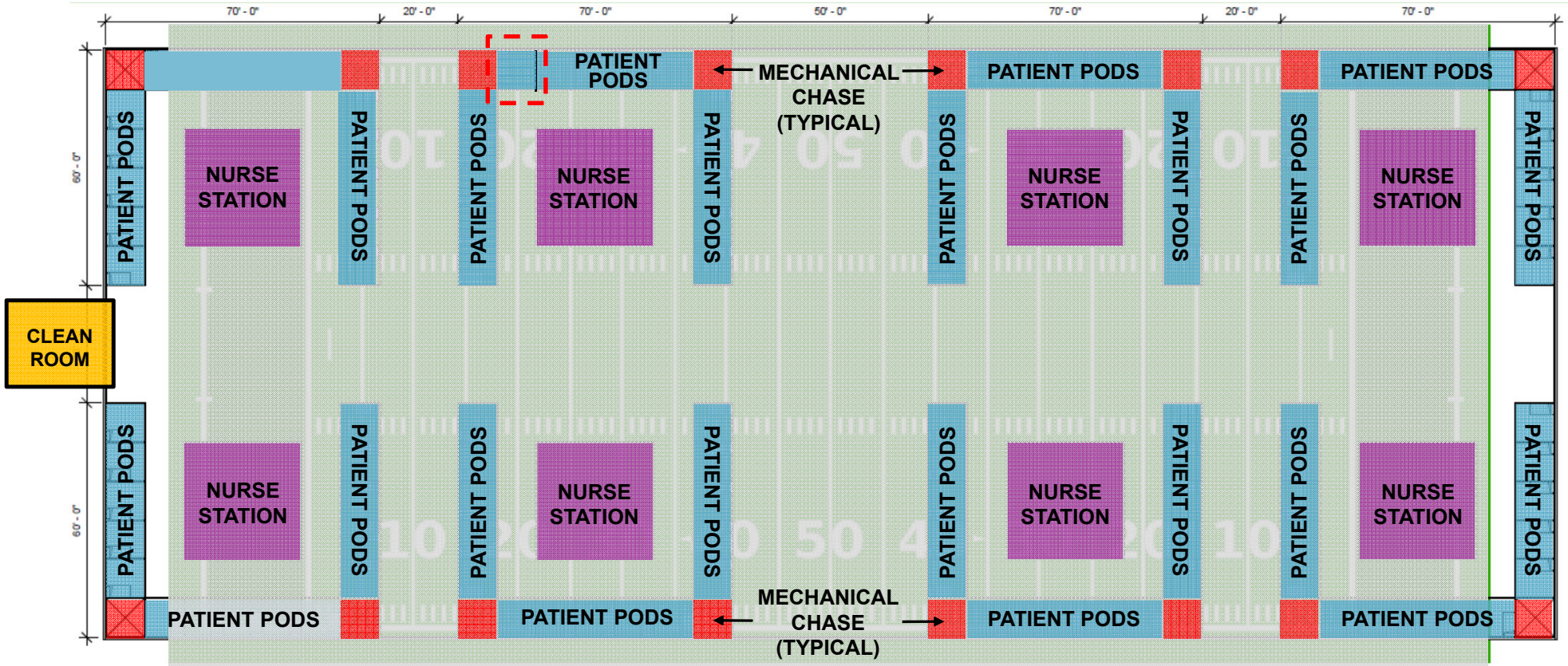
Bedside Toilet





# A2HC TYPICAL LAYOUT

- 1 NURSE STATION FOR EACH 15 PATIENTS
- TOTAL OF 120 PODS

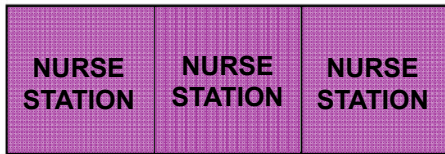


### FACILITY PROVIDED

- FIELD HOUSE ICE MACHINE

### ENGINEERING CHANGES

- ALL TYPICAL FLOOR PLAN ADDITIONS
- ADD GENERATOR



### MEDICAL EQUIPMENT

- ALL TYPICAL FLOOR PLAN ADDITIONS
- NURSE CALL
- STORAGE
- WORKSTATIONS
- MED DISPENSING UNITS