

Category 6A and 6, Indoor/Outdoor (I/O) and Outdoor Cables

Category 6A and 6 Outside Plant (OSP) Cables are 100% gel-filled with a non-sticky PP compound that is easy to remove when terminating. Each product also has a thick polyethylene or PVC jacket for better moisture and cut-through resistance. All products on this page meet or exceed ANSI/TIA-568-C.2 and ANSI/ICEA S-56-434 requirements. The OSP versions comply with ANSI/ICEA S-99-689 and ANSI/ICEA S-107-704 Water Penetration Test, and the CMR/CMX versions comply with ANSI/ICEA S-100-685.



Outside Plant, Gel-filled

Indoor/Outdoor CMR/CMX Outdoor Cables (Sunlight Resistant)

Description		Belden Part Number	
		Nonbonded-Pair	
Color	Length	Shielded (F/UTP)	Unshielded (UTP)
Category 6A (10GX)**, 4-Pair, 23 AWG, PVC Jacket			
Black	1000 ft (305 m)	2142A 0101000	2148A 0101000
Category 6 (2400)**, 4-Pair, 23 AWG, PVC Jacket			
Black	1000 ft (305 m)	2149A 0101000	2146A 0101000

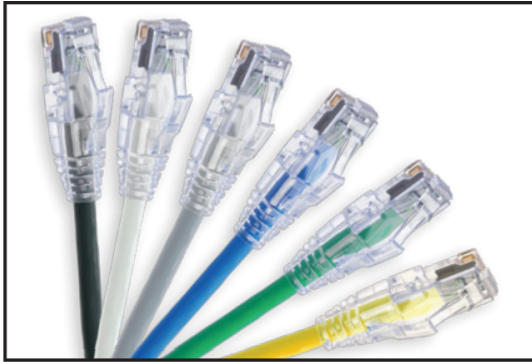
Outside Plant OSP Cables (Suitable for Wet Locations)

Description		Belden Part Number	
		Nonbonded-Pair	
Color	Length	Shielded F/UTP)	Unshielded (UTP)
Category 6A, 4-Pair, 23 AWG, Gel Filled, PE Jacket			
Black	1000 ft (305 m)	OSP6AF 0101000	OSP6AU 0101000
Category 6, 4-Pair, 23 AWG, Gel Filled, PE Jacket			
Black	1000 ft (305 m)	OSP6F 0101000	OSP6U 0101000

Faster.
Easier.
Better.

Category 6A and 6, Small-Diameter Patch Cords

Nonbonded-Pair (28 AWG)



Small-Diameter Patch Cords

Small-Diameter Patch Cords offer a great solution for networks installed in small spaces by reducing congestion and allowing a tight bend radius and improved airflow. The 28 AWG stranded conductors provide standards-compliant performance when up to 20.7 ft (6.3 m) of patch cord is used in a standard 295 ft (90 m) channel.

Category 6A, Small-Diameter Patch Cords

Description	Belden Part Number					
	Nonbonded-Pair					
Length	Yellow	Green	Blue	Gray	White	Black
Small-Diameter Patch Cord, UTP, 28 AWG Stranded, T568A/B-T568A/B, Riser-CMR						
2 ft (0.6 m)	CAD1104002	CAD1105002	CAD1106002	CAD1108002	CAD1109002	CAD1100002
4 ft (1.2 m)	CAD1104004	CAD1105004	CAD1106004	CAD1108004	CAD1109004	CAD1100004
20 ft (6.1 m)	CAD1104020	CAD1105020	CAD1106020	CAD1108020	CAD1109020	CAD1100020
XXX ft	CAD1104XXX	CAD1105XXX	CAD1106XXX	CAD1108XXX	CAD1109XXX	CAD1100XXX

Category 6, Small-Diameter Patch Cords

Description	Belden Part Number					
	Nonbonded-Pair					
Length	Yellow	Green	Blue	Gray	White	Black
Small-Diameter Patch Cords, UTP, 28 AWG Stranded, T568A/B-T568A/B, Riser-CMR						
2 ft (0.6 m)	C6D1104002	C6D1105002	C6D1106002	C6D1108002	C6D1109002	C6D1100002
4 ft (1.2 m)	C6D1104004	C6D1105004	C6D1106004	C6D1108004	C6D1109004	C6D1100004
20 ft (6.1 m)	C6D1104020	C6D1105020	C6D1106020	C6D1108020	C6D1109020	C6D1100020
XXX ft.	C6D1104XXX	C6D1105XXX	C6D1106XXX	C6D1108XXX	C6D1109XXX	C6D1100XXX

Use XXX to specify length in feet 001-050 ft in increments of 1 ft.

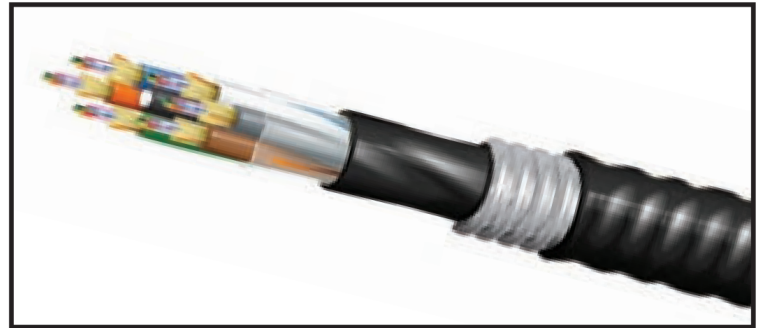
Faster.
Easier.
Better.

FiberExpress Armored Distribution Cables

Tight Buffer - Indoor/Outdoor, Plenum Rated

Indoor/Outdoor Specifications:

- UV Resistant Jacket
- Moisture Resistant Jacket
- Fungus Resistant Jacket
- Water Blocking Aramid
- Water Blocking Tape
- Aluminum Interlocked



Optical Fiber Armored Distribution Cable, Indoor/Outdoor

Fiber Count	Belden Part Number	
	OM3 Black	OM4 Black
12	FD3D012A9	FD4D012A9
24	FD3D024A9	FD4D024A9

GMMK, Micro Tactical Cable

24 Strand Single Mode Fiber



Fiber Description / Count	24 Strand Part Number
9/125 ITU G.652D & G.657A1	GMMKA24

Description:

- This metal-free tactical cable has been designed for de-spooling and re-spooling repeatedly
- Combines the ruggedness of tactical cable with ultra-high density of micro-cable technology
- High fiber density for longer deployment lengths
- Supports all computer network applications

Faster.
Easier.
Better.

FiberExpress Pre-Terminated Assemblies

FX Patch Cords



FX LC Duplex Patch Cords, Assortment

Uncomplicated, robust, versatile and conveniently available. Superior quality and performance FX patch cords deliver a robust design to withstand the rigors of constant use in both off-the-shelf standard configurations and rapid custom tailored installations.

FX Patch Cords - Standard Performance

Description	FX OM1	FX OM3	FX OM4	FX SM	FX SM/APC
Cable Performance - LC/SC/ST					
IL Max. 850 nm/1300 nm (dB/Km)	3.5/1.2	3.0/1.2	3.0/1.0	–	–
IL Max. 1310 nm/1550 nm (dB/Km)	–	–	–	0.5/0.5	–
Fire Rating	LC/SC/ST: Riser				
Cable Style	LC: Interconnect Duplex Zip 2 mm LC Uniboot: Interconnect Mini-Round 2 mm SC/ST/Hybrid: Interconnect Duplex Zip 3 mm				
Jacket Color	Orange	Aqua	Erika Violet	Yellow	Yellow
Connector Performance - LC/SC/ST					
IL Max. (dB)	0.25	0.25	0.15	0.35	0.35
Polish - RL Typ. (dB)	PC - 30	PC - 30	PC - 30	UPC - 55	APC - 65
Polarity	A-TO-B / B-TO-A				
Connector Color	Beige	Aqua	Erika Violet	Blue	Green
Cable Performance - MPO					
IL Max. 850 nm/1300 nm (dB/Km)	3.5/1.2	3.0/1.2	3.0/1.0	–	–
IL Max. 1310 nm/1550 nm (dB/Km)	–	–	–	0.5/0.5	–
Fire Rating	Plenum				
Cable Style	MPO-12: Interconnect Mini-Round 2 mm				
Jacket Color	Orange	Aqua	Erika Violet	Yellow	Yellow
Connector Performance - MPO					
IL Max. (dB)	0.5	0.35	0.2	–	0.5
Polish - RL Typ. (dB)	PC - 30	PC - 30	PC - 30	–	APC - 60
Polarity	Type-B				
Connector Color	Beige	Aqua	Erika Violet	Blue	Green

Faster.
Easier.
Better.

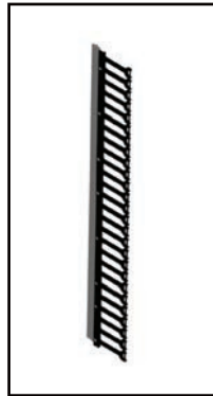
XHW Series - Wall-Mount Cabinets

Ideal hosting option for confined spaces

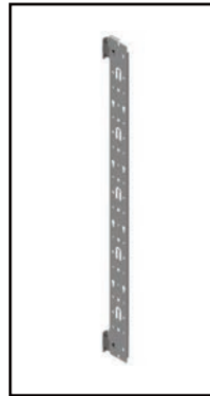


XHW-4830-GD - Closed

Available in mounting unit increments of 12RU, 19RU and 26RU, Belden Wall-Mount Cabinets offer rugged construction, optimized equipment access and flexible cable management and access features.



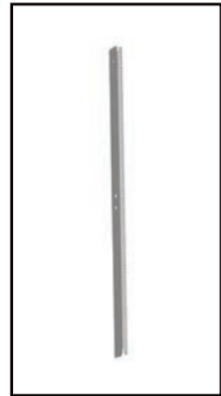
HWFS_*
Vertical Finger Strip
Manager



HWVMP01_01*
Vertical Finger Strip
Manager



XHW_ BBD*
Plywood Backboard
Kit



XHW_ RLS1224* (1)
Pair of EIA Rails #12-24
with hardware included

Belden Part Number	W	H	D	DC Mid-Section	Cable Entry	Vented Slots	Rack Unit (RU)	Door Type	Weight	Weight Capacity
24" - 12RU Wall-Mount Cabinets										
XHW-2406-GD	23.062"	23.75"	6.0"	N/A	(2) 2.5" x 8.0"	N/A	12	Polycarbonate	25 lbs	300 lbs
XHW-2406-SD	23.062"	23.75"	6.0"	N/A	(2) 2.5" x 8.0"	N/A	12	Solid	30 lbs	300 lbs
XHW-2406-PD	23.062"	23.75"	6.0"	N/A	(2) 2.5" x 8.0"	N/A	12	Perforated	20 lbs	300 lbs
XHW-2424-GD	23.062"	23.75"	24.0"	17.60"	(2) 2.5" x 8.0"	2 Per Side	12	Polycarbonate	115 lbs	300 lbs
XHW-2424-SD	23.062"	23.75"	24.0"	17.60"	(2) 2.5" x 8.0"	2 Per Side	12	Solid	125 lbs	300 lbs
XHW-2424-PD	23.062"	23.75"	24.0"	17.60"	(2) 2.5" x 8.0"	2 Per Side	12	Perforated	110 lbs	300 lbs
XHW-2430-GD	23.062"	23.75"	30.0"	17.60"	(2) 2.5" x 8.0"	2 Per Side	12	Polycarbonate	125 lbs	300 lbs
XHW-2430-SD	23.062"	23.75"	30.0"	17.60"	(2) 2.5" x 8.0"	2 Per Side	12	Solid	135 lbs	300 lbs
XHW-2430-PD	23.062"	23.75"	30.0"	17.60"	(2) 2.5" x 8.0"	2 Per Side	12	Perforated	120 lbs	300 lbs

Description	Belden Part Number
24" Wall-Mount Accessories	
Vertical Cable Manager - mounts in rear section using brackets or in mid-section on rail struts	HWVMP012401
Vertical Finger Strip Manager	HWFS24
(1) Pair of EIA Rails tapped #12-24 with (20) pcs mounting hardware included	XHW24RLS1224
Plywood Backboard Kit - mounts in rear section using brackets	XHW24BBD